



ENDURANCE CONVEYOR BELT



Goodall
A LewisGoetz Company

LewisGoetz

**Valley Rubber
& Gasket**
A LewisGoetz Company



Along with our extensive line of belting products, LewisGoetz and Goodall also provide conveyor system maintenance services to our customers. We have professional crews that have all of the appropriate training including: MSHA part 46 and 48, OSHA 10 hour construction, CPR, first aid, AED Certified, DOT physical, road testing, fork lift, and task training. Most important is the factory training in proper splice technique for the many different constructions of belt.



Conveyor System Services Include:

- New Belt Installation and Old Belt Disposal
- Steel Cable and Fabric Belt Vulcanization
- Mechanical Fasteners Installed
- Scraper Installation and Maintenance
- Complete Down Time Support
- Structural Fabrication and Welding
- Pulley and Idler Installation
- Hot and Cold Vulcanized V-Guides
- Cleats and Flanges Installed and Maintained
- Installation of Pulley Lagging
- Laser Alignment of Belt Structure

Conveyor System Consulting Services Include:

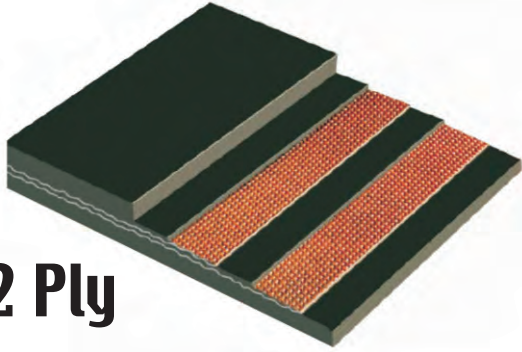
- Providing splicing tools and equipment appropriate for your application
- Building belt winding equipment specifically for your needs
- Fabricating belt stands to keep your conveyor belt inventory in good condition
- Evaluating conveyor system problem conditions and recommending appropriate solutions
- Ultrasonic cover gauge analysis to identify belt cover wear patterns and loading condition problems
- Analyzing conveyor belt speed, HP requirements, and tons per hour requirement to make belt recommendations



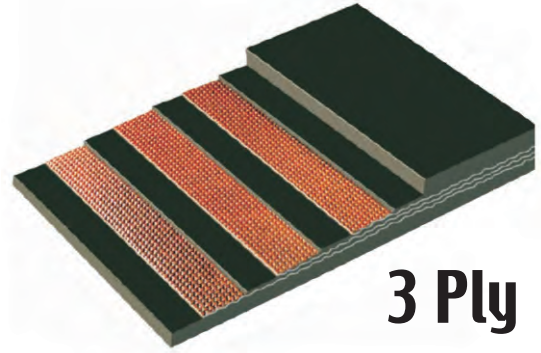
As a full service distributor, many LewisGoetz divisions are equipped to mobilize certified splice crews. These crews are capable of the removal and disposal of your old belt, installing and vulcanizing your new belt, performing belt repairs, and performing on-site pulley lagging and chute lining. They are also skilled in the installation of belt scrapers, trouble-shooting, and assisting you with a preventive maintenance program for all of your conveyor systems. LewisGoetz is ready 24/7 to respond to your conveyor system needs to keep your operation running.



ENDURANCE



2 Ply



3 Ply



Polyester Fabric (EP) Conveyor Belt

The Combination of Polyester warp and nylon filling provides technically low elongation and high impact abuse resistance.

Special Features

- High resistance to tension
- Low elongation
- Outstanding stability dimensionally
- Impact resistance
- Complete moisture & mildew protection



Grade		EP100	EP125	EP150	EP200	EP250	EP300	EP350	EP400	EP500
Min. Tensile Strength	kg/cm-ply	100	125	150	200	250	300	350	400	500
	lb/in-ply	560	700	850	1,120	1,400	1,680	2,000	2,240	2,800
Working Tension Rating (Vulcanized)	kg/cm-ply	10.0	12.5	15.0	20.0	25.0	30.0	35.0	40.0	50.0
	lb/in-ply	56.0	70.0	84.0	112.0	140.0	168.0	200.0	224.0	280.0
Approx. Gauge per Ply with skim coat.	mm	0.9	1.2	1.4	1.5	1.9	2.0	2.1	2.4	3.2
	inch	0.035	0.047	0.055	0.059	0.075	0.079	0.083	0.094	0.126

Carcass Grade

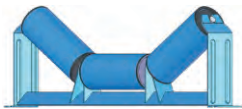
Grade	160	200	250	315	400	500	630	800	1000	1250	1600	2000
2 ply	160/2	200/2	250/2	315/2	400/2							
3 ply			250/3	315/3	400/3	500/3	630/3	800/3	1000/3	1250/3		
4 ply					400/4	500/4	630/4	800/4	1000/4	1250/4	1600/4	
5 ply						500/5	630/5	800/5	1000/5	1250/5	1600/5	2000/5
6 ply							630/6	800/6	1000/6	1250/6	1600/6	2000/6



Conveyor Accessories

IDLERS

An alternative to steel rolls of the past is our maintenance-free idler. These idlers utilize a patented polymer endcap design. All CEMA B, C and D idlers feature polymer endcaps. Idlers are constructed of high-strength polymer, surrounding a maintenance-free bearing in its endcap design. This allows the idler to be corrosion resistant, lightweight, longer lasting, and a cost-effective alternative to regular steel caps. A triple labyrinth seal and felt ring, both encased in the polymer endcap using ultrasonic welding techniques, ensures a seal that will last longer than conventional methods.



EQUAL ROLL STEEL



EQUAL ROLL IMPACT



UNEQUAL ROLL STEEL



UNEQUAL ROLL IMPACT



TROUGH TRAINING



FLAT IMPACT



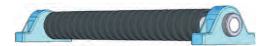
FLAT CARRYING



RUBBER DISC RETURN



STEEL RETURN ROLL



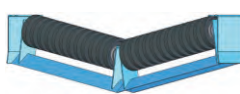
FLAT IMPACT - LIVE SHAFT



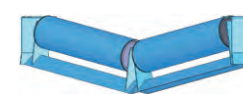
DISC RETURN TRAINING



STEEL RETURN TRAINING



DISC V-RETURN



STEEL V-RETURN

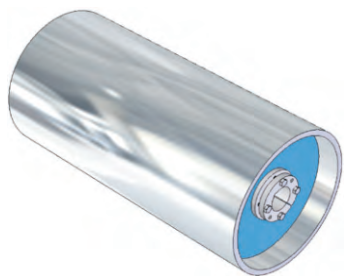


CHANNEL INSET

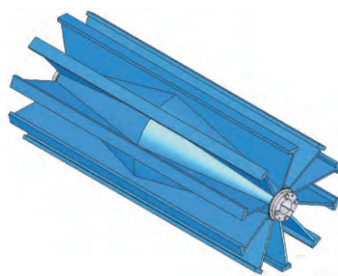
PULLEYS

Pulleys are fabricated from heavy schedule pipe. Machined large trapezoidal crown angle ensures maximum concentricity of the pulley to 0.000–0.030", compared to the industry standard of 0.080–0.125". This process provides our customers with significant advantages:

- Concentricity provides maximum contact with the belt, consistent belt content discharge, less deflection of shaft and reduced stress on the bearings
- Thick pulley shell absorbs more stress and protects against abrasive wear
- Large crown angle provides superior belt tracking capabilities



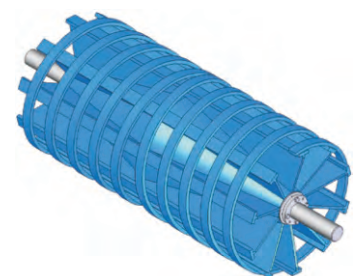
DRUM PULLEYS



WING PULLEYS



SPIRAL DRUM PULLEYS

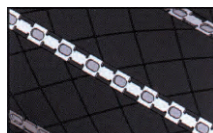


SPIRAL WING PULLEYS

LAGGING SELECTION

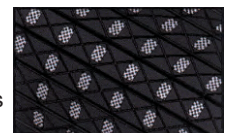
SLIDE LAGGING

Used for conveyors with high torque on the drive pulley. Individual pads can be conveniently re-lagged with pulley in place. Used when pulley is not easily removed from system.



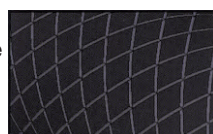
CERAMIC LAGGING

Perfect for high wear/abrasion applications and when slippage becomes a problem due to moisture or environmental conditions. Eliminates ice build-up in cooler climates.



HERRINGBONE/DIAMOND LAGGING

A general duty lagging used primarily for aggregate and mining applications. Prevents slippage while providing superior traction by shedding moisture.



WING LAGGING

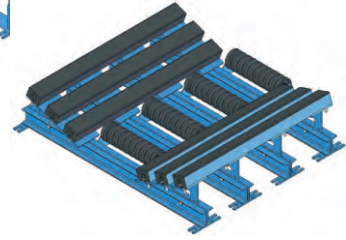
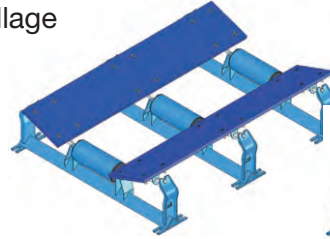
Adds life to the wing pulley while reducing stress on the conveyor belt. Abrasion resistant.





SLIDER & SLIDER IMPACT BEDS

- Optimal design for sealing with skirtboard rubber eliminating spillage
- UHMW slider and impact bars minimize friction and belt drag
- Available in CEMA B, C, D, E, and F load ratings
- Constructed for ultimate strength and durability
- Perfect for medium-heavy duty applications
- Maximizes skirting life
- Center rolls reduce friction allowing the belt to roll freely
- All beds manufactured to standard CEMA bolting and height dimensions
- Custom designs to meet your specific needs



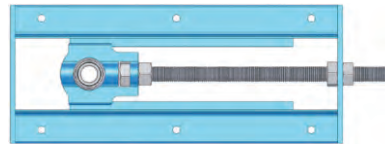
ACCESSORIES



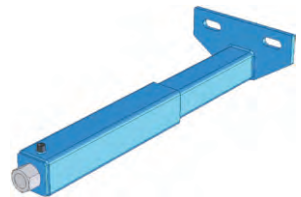
GUIDE ROLLERS



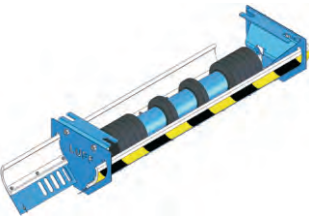
TAKE-UPS



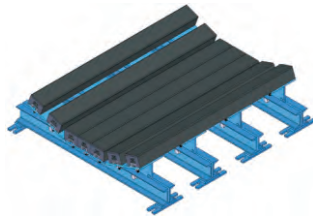
HEAVY DUTY TAKE-UPS



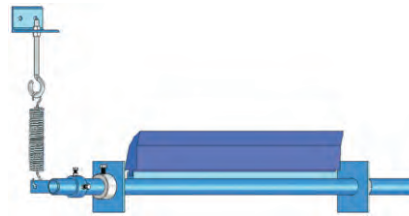
TELESCOPIC TAKE-UPS



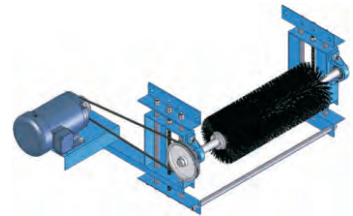
RETURN ROLLER GUARDS



IMPACT BEDS



BELT CLEANERS



BELT BRUSH CLEANING UNIT

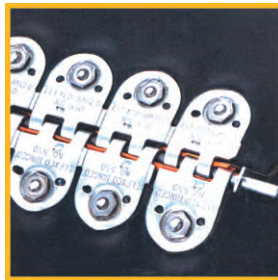
FASTENERS



SR Rivet Hinged



R2



Bolt Hinged



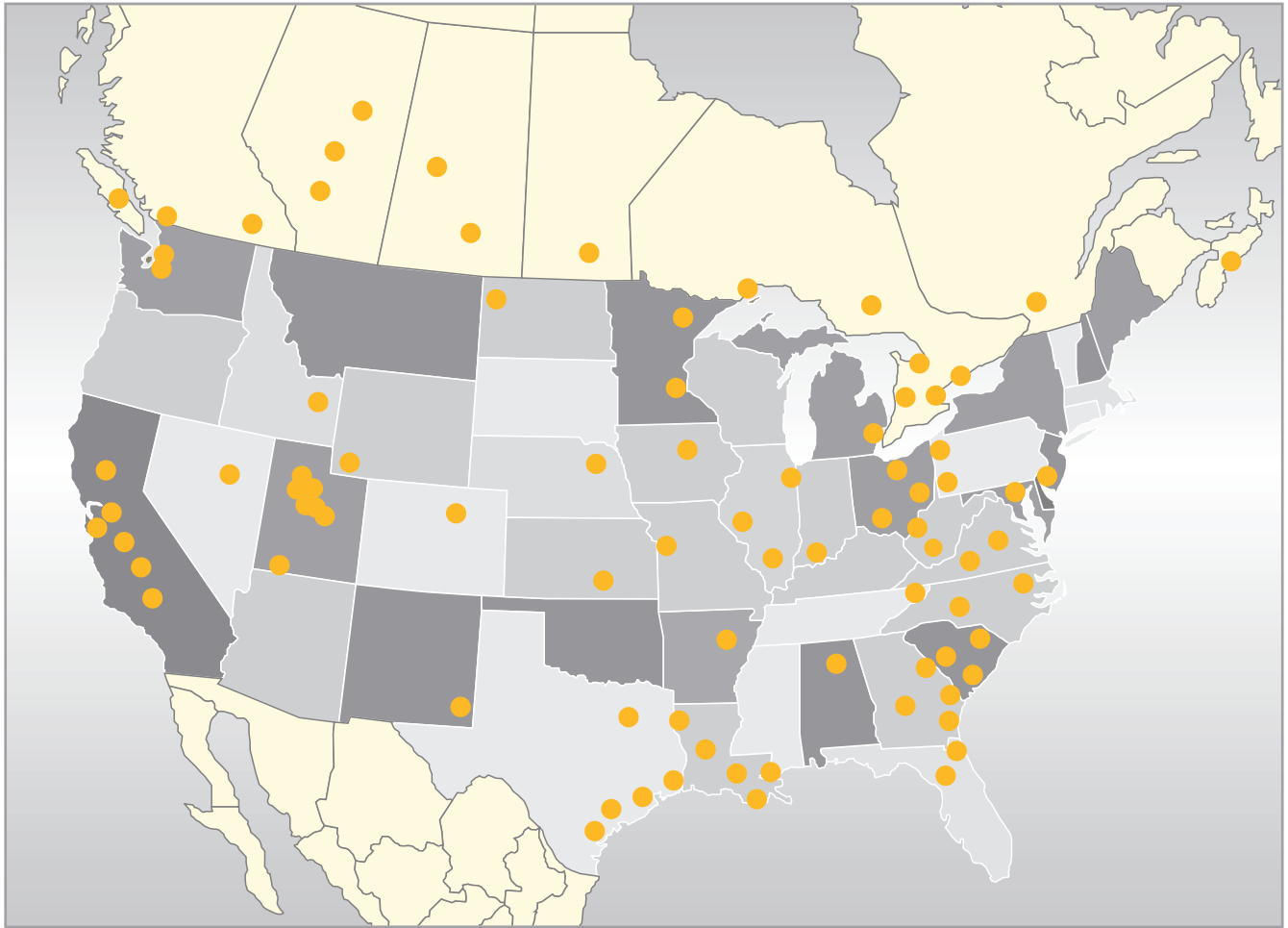
Solid Bolt Plate



BR Rivet Solid Plate

INSTALLATION TOOLS





Other Products Offered by LewisGoetz



Rubber/Plastic Hose

Air, Chemical, Steam, Water, Material Handling, Petroleum, Welding, Hydraulic, Barge Loading/Unloading, Fire, Sand Blast, Rotary Drilling, Decoking, Armored, Composite, Fluoropolymer Lined, Pressure Wash, PVC Suction & Discharge



Couplings/Adapters

King Nipples, Cam & Groove, High Pressure Air, Clamps, Hydraulic, Full Flow, Fire Hose Couplings, Adapters, Nozzles, Quick Disconnects, Tank Truck Accessories, Gauges, Dry Disconnects and More



Metal/Fluoropolymer Hose

Interlocked, Convolute, SST Over Braided, Fluoropolymer Lined Smooth Bore and High Pressure, Armored, 304, 316, 321 Stainless Steel Assemblies, Monel, Inconel, Bronze



Gaskets/Sheeting/Packing

Non-Asbestos, Spiral Wound, Heat Exchanger, Double Jacket, Cloth Inserted, Diaphragm, Graphite, Pump, Valve Stem, Compression, Molded, Sheet, Die Formed Rings, O-Rings, Custom Stud Bolts, High Pressure Ring Joints



Expansion Joints / Molded Rubber Products

Metal, Rubber, Fluoropolymer, Hand Built, Molded, Flue Duct, U-Joints, Bellows, Flex Connectors, Vibration Eliminators and Elbows, Swab Cups, Numerous Molded Rubber Products



Safety Products

Eyewear, Goggles and Face Shields, Hardhats and Bump Caps, Hearing Protection, Hand and Arm Protection, Respirators, Protective Clothing, Footwear, Ergonomics and Climate Control

For more information about our Company, contact us at info@lewis-goetz.com or visit us on the web at:



www.lewis-goetz.com
www.goodall-canada.com
www.valleyrubberandgasket.com

